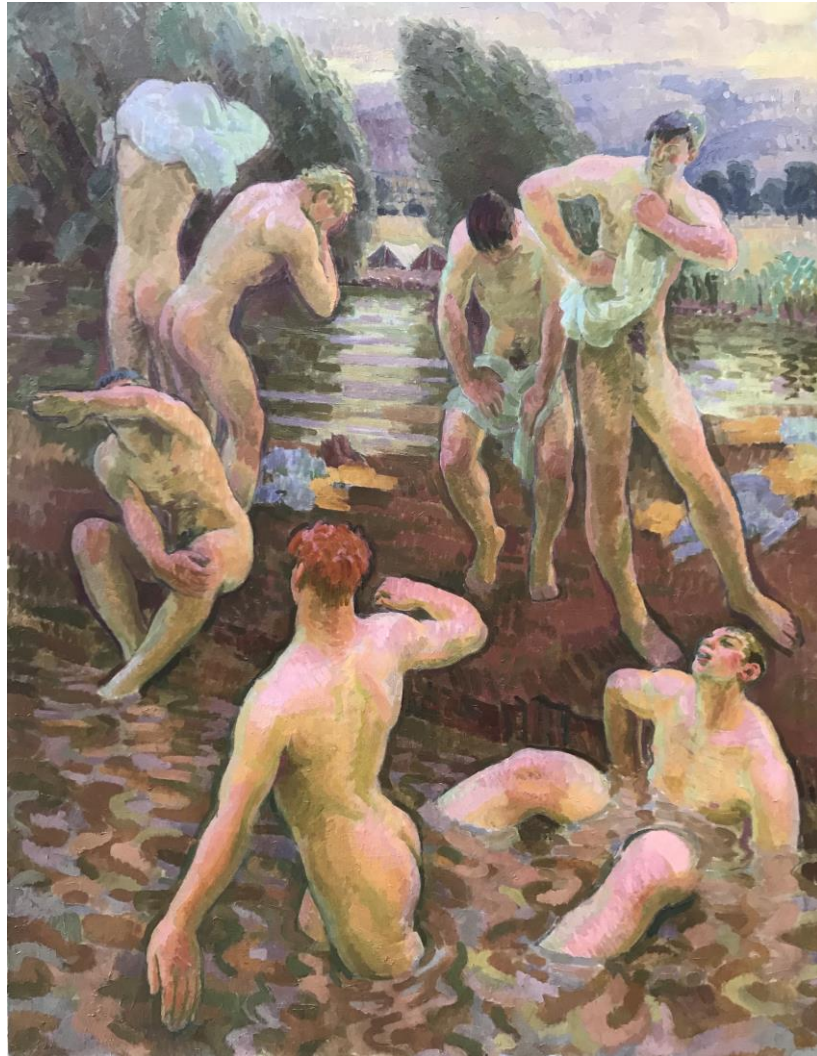


Henry Lamb MC RA (1883-1960)

Works from 1914 – 1921

9 October – 2 November 2019
Messums London

Collectors Preview: 8 October, 6 – 6.30pm
Artists Party: 8 October, 6.30 – 8.30pm



Press Release:

As representatives of the Henry Lamb Estate Messums London is delighted to present a collection of oils and drawings by Henry Lamb from 1914 – 1921.

Henry Lamb was an Australian-born British painter who was a founding member of the Camden Town Group. The son of a mathematician, Lamb was raised in Manchester and later studied medicine at Owen's College. He then moved to London where he studied painting under William Orpen and Augustus John at Chelsea School of Art, and later under Jacques-Emile Blanche in Paris in 1907 and 1911. In 1914 Lamb consciously joined the war effort, helping in a hospital in France before returning to London in 1915 to

complete his training as a Doctor at Guys Hospital from where he was commissioned into the Royal Army Medical Corp and posted to Salonika. He was shortly seconded to the Royal Inniskilling Fusiliers and travelled with them in 1917 to Palestine, where he was awarded his Military Cross, and then to France where he was gassed. He resigned his commission in 1919 and settled in Hampstead and from there painted some of his finest paintings, most of which are now in public collections, leading up to his first solo show at the Alpine Club in 1922.

The exhibition features a selection of working drawings for two of Lamb's most celebrated paintings, *Advance Dressing Station on the Struma 1916* (Manchester Art Gallery) and *Irish Troops in the Judeaen Hills, surprised by a Turkish bombardment, 1919* (Imperial War Museum). Also for sale is a painting of soldiers bathing in the Struma river in Greece, near Salonika where Lamb was stationed with the artist, Stanley Spencer. The relationship between the two artists is explored in a chapter in the catalogue for the show by David Taylor, curator of pictures and sculptures for the National Trust.

For further details please contact:

Hannah Hooks hannah.hooks@messumswiltshire.com

Polly Pentreath pgpentreath@sky.com

Tel: 01747445042/ 07879426435/ 07794753720